

Club Notes:



June 2011



The Emerald Empress contains 112 patterns, including 35 panos, a retail value of \$1295.00

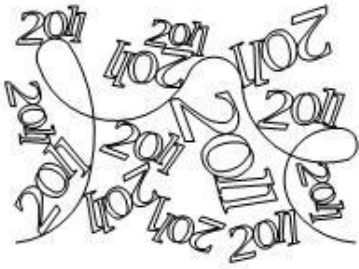


Summer is here....and so are the Cicadas! Their sounds ebb and flow and bring back memories of sitting out on the patio with my Dad...sometimes having to practically yell to be heard over all their din! While Kim has been in Montana these past couple of weeks, her Jack Russell/Chihuahua mix (Lola) and my Schnauzer (Harvey) have been keeping each other company....and *mostly* out of trouble. They have found the Cicadas to be worthy of stalking and pouncing upon! It's very entertaining!

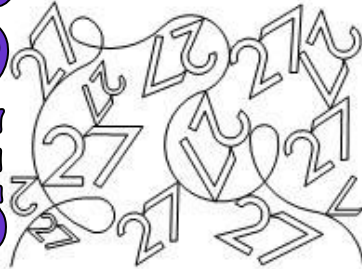
There are 35 panos in the June batch of patterns....you guys have been very creative (or your quilt customers have been). The May patterns hadn't been released for more than 2 hours when we started getting emails requesting the chickadee pattern be made into a pano! I'm really going to try to teach Kim how to make some less dense e2e patterns for those who like things "lightly quilted".

Hope you all enjoy the summer!
Janet & Kim

Panos



Pattern: 2011 pano
Archive: Emerald Empress



Pattern: 27 pano 001
Archive: Emerald Empress



Pattern: baseball stars pano 004
Archive: Emerald Empress



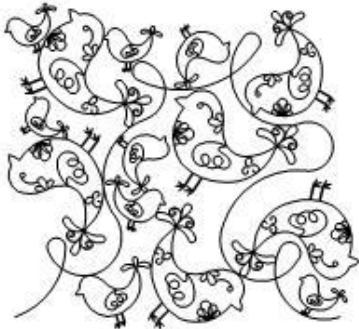
Pattern: birch tree pano 002
Archive: Emerald Empress



Pattern: camaro pano 001
Archive: Emerald Empress



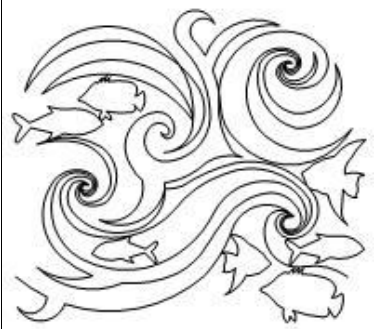
Pattern: carter pano
Archive: Emerald Empress



Pattern: chickadee pano 001
Archive: Emerald Empress



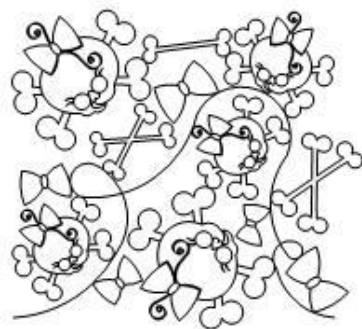
Pattern: day lily pano 001
Archive: Emerald Empress



Pattern: deep blue sea pano 002
Archive: Emerald Empress



Pattern: fireweed pano 001
Archive: Emerald Empress



Pattern: girly skull pano 001
Archive: Emerald Empress



Pattern: go eagles pano 001
Archive: Emerald Empress



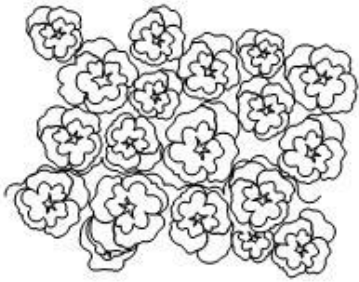
Danos Con't



Pattern: gowildcats pano
Archive: Emerald Empress

Pattern: hawkeye pano 001
Archive: Emerald Empress

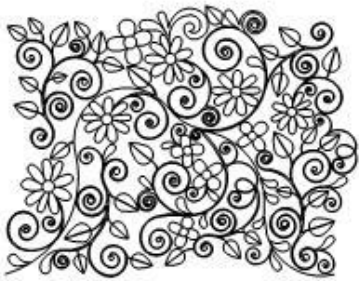
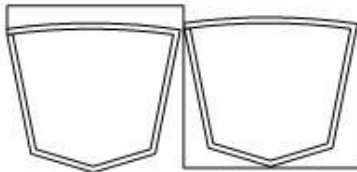
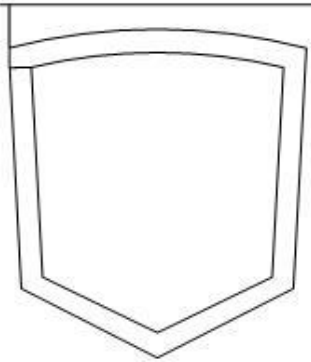
Pattern: josh pano 001
Archive: Emerald Empress



Pattern: kaffee flower pano 001
Archive: Emerald Empress

Pattern: overcoat bear pano 001
Archive: Emerald Empress

Pattern: pansy pano 002
Archive: Emerald Empress



Pattern: pocket pano 001
Archive: Emerald Empress

Pattern: pocket pano 002
Archive: Emerald Empress

Pattern: pretty whimsy pano 001
Archive: Emerald Empress



Pattern: rachel pano
Archive: Emerald Empress

Pattern: raindrop pano 001
Archive: Emerald Empress

Pattern: scroll pano 002
Archive: Emerald Empress

Panos Cont'



Pattern: scroll pano 003
Archive: Emerald Empress



Pattern: scroll pano 004
Archive: Emerald Empress



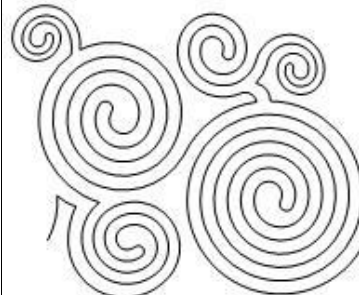
Pattern: sea turtle brd cm
Archive: Emerald Empress



Pattern: skateboard pano 001
Archive: Emerald Empress



Pattern: spiral e2e odd row
Archive: Emerald Empress



Pattern: spiral e2e even row
Archive: Emerald Empress



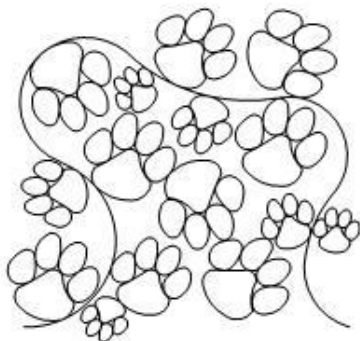
Pattern: sports pano 003
Archive: Emerald Empress



Pattern: star pano 001
Archive: Emerald Empress



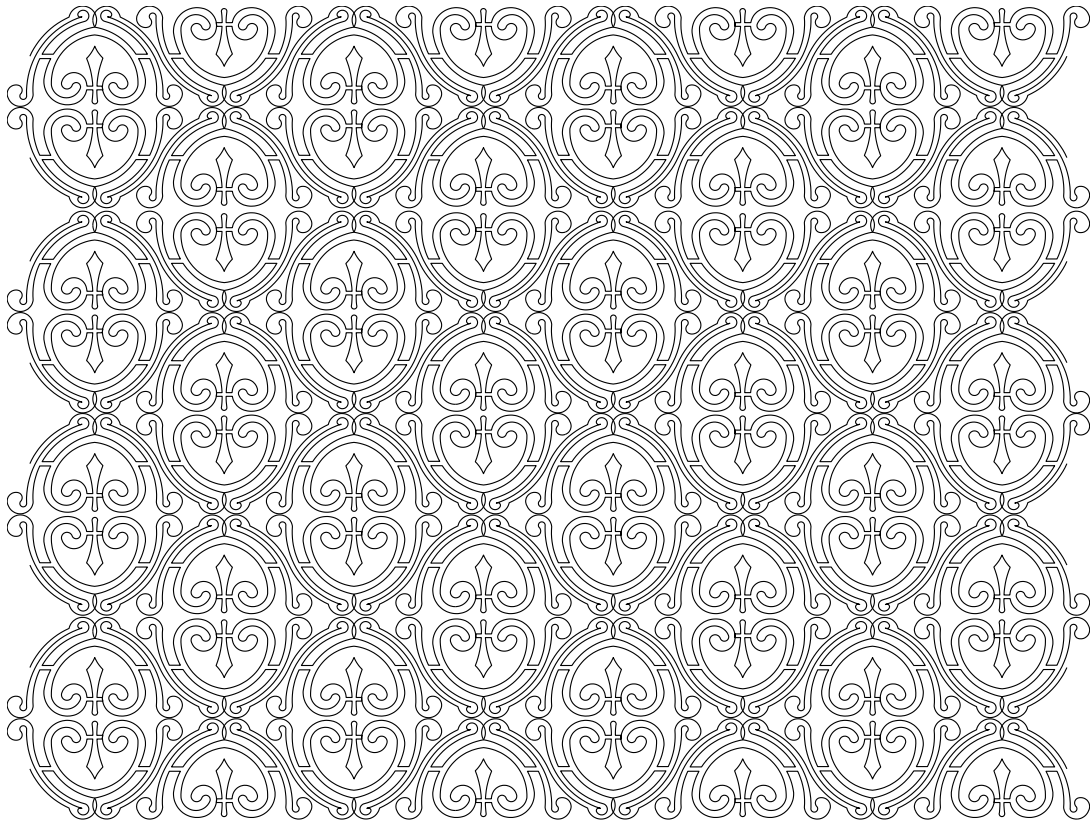
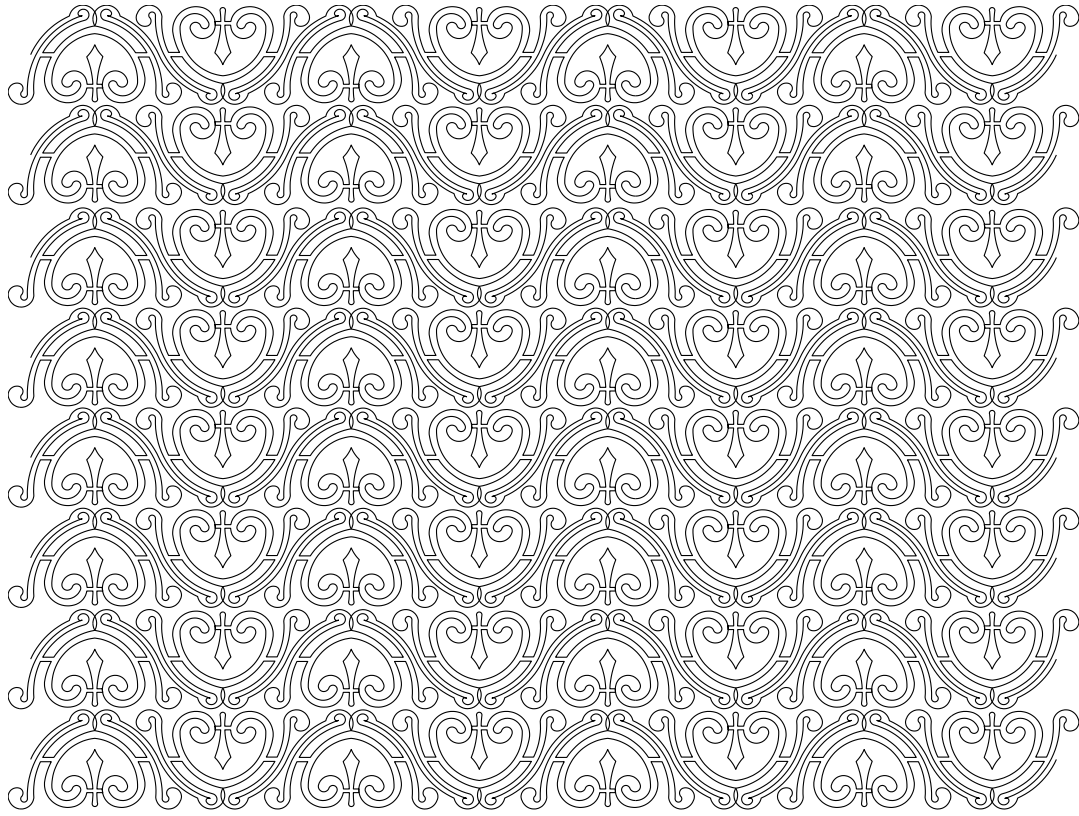
Pattern: star pano 003
Archive: Emerald Empress



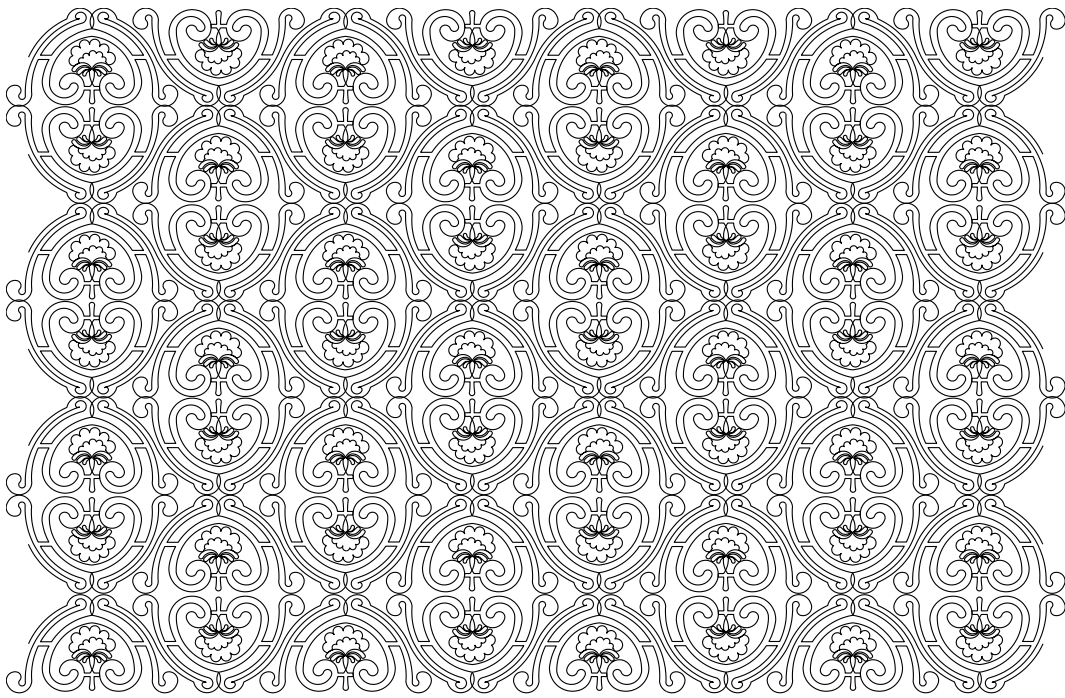
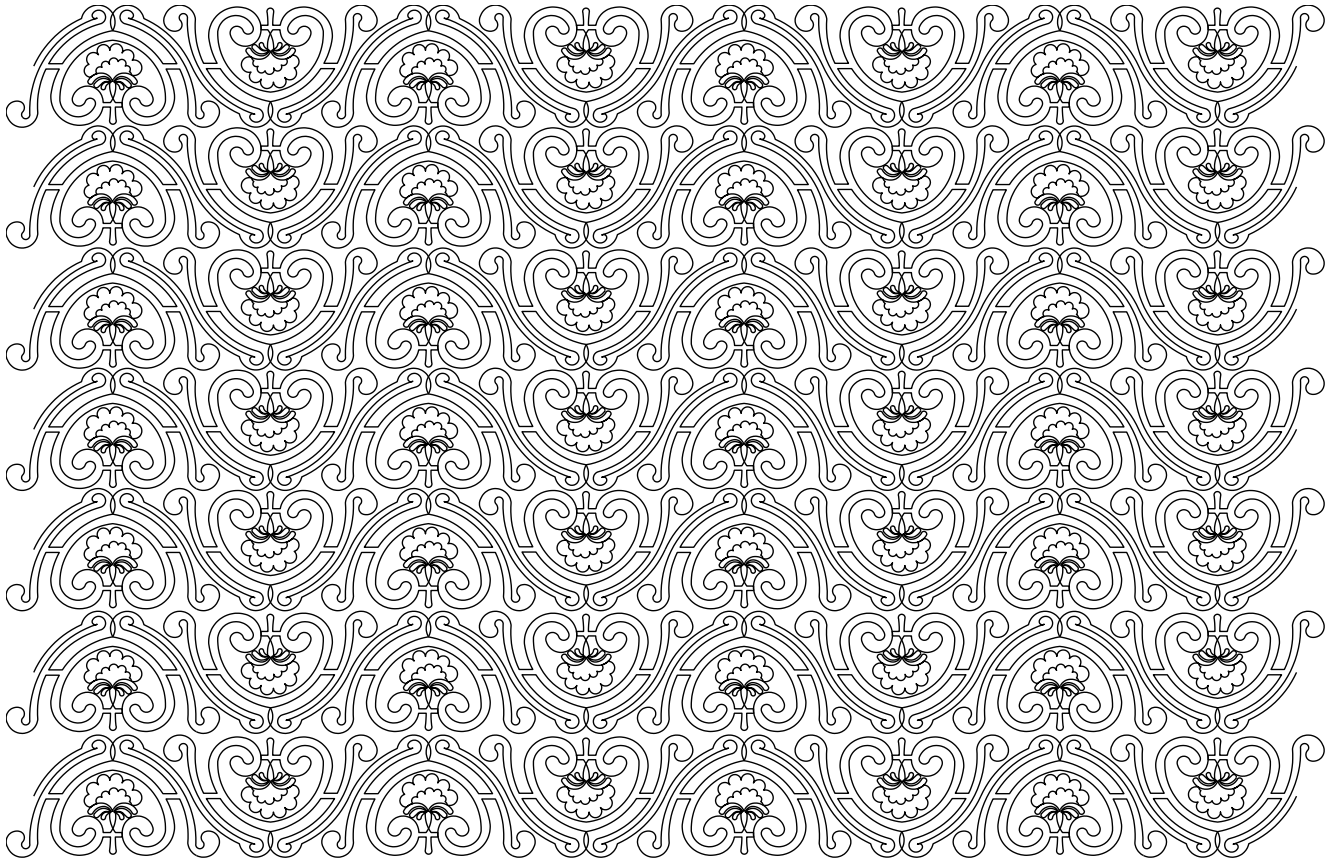
Pattern: tiger paw pano 001
Archive: Emerald Empress



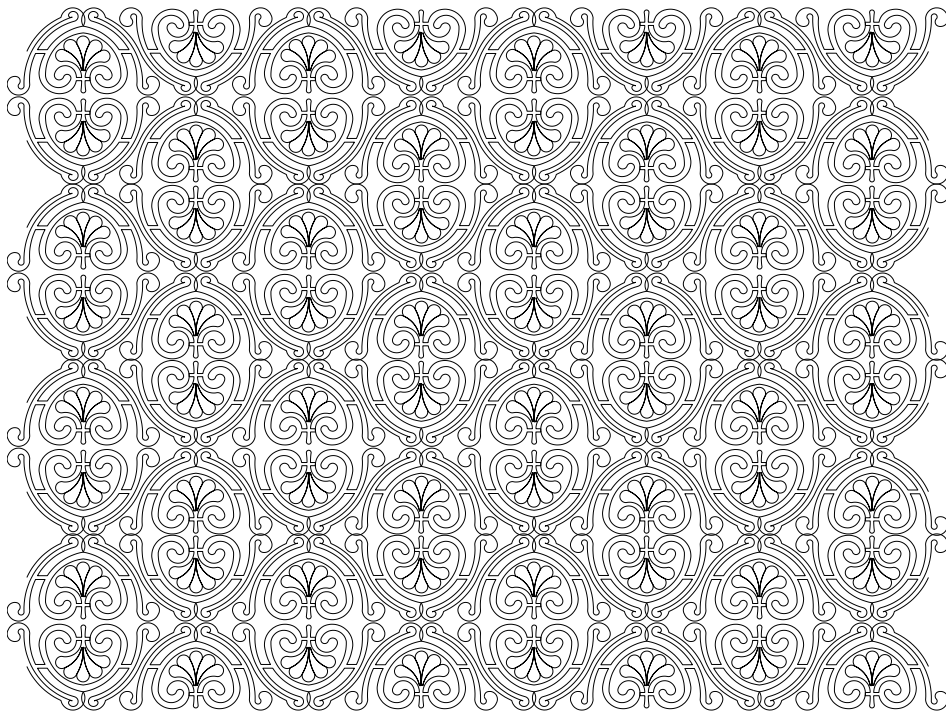
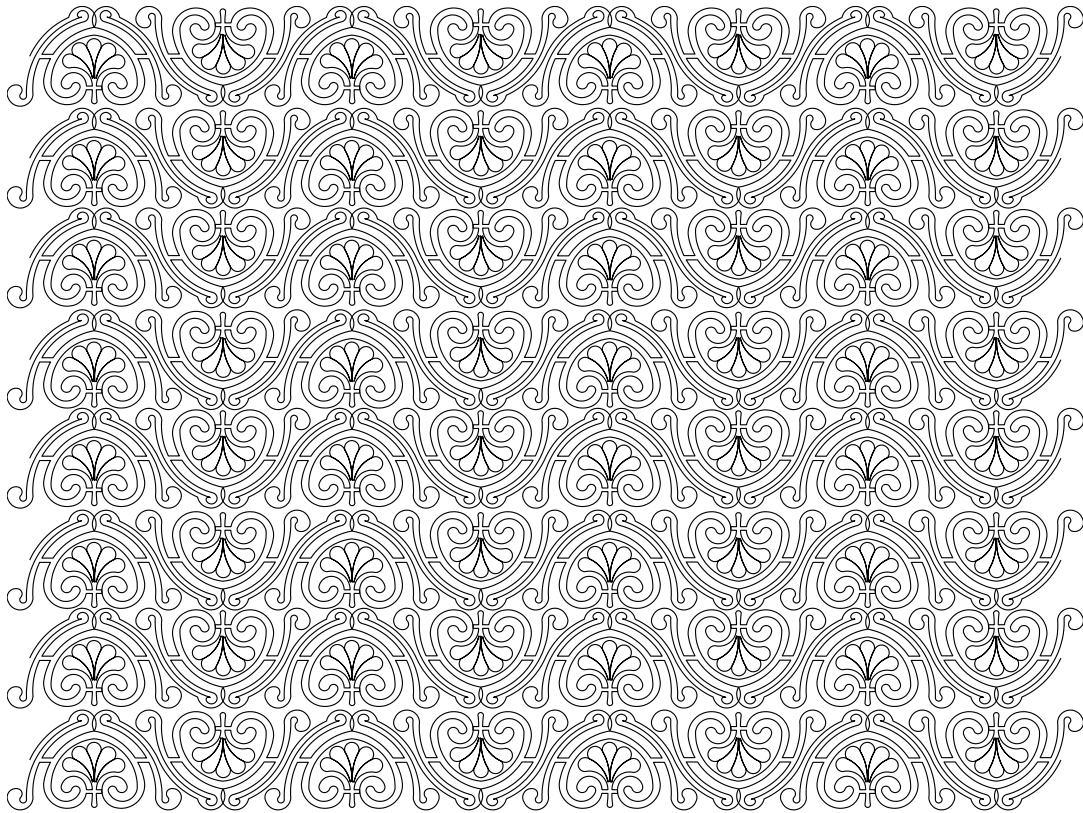
Pattern: z pano 001
Archive: Emerald Empress



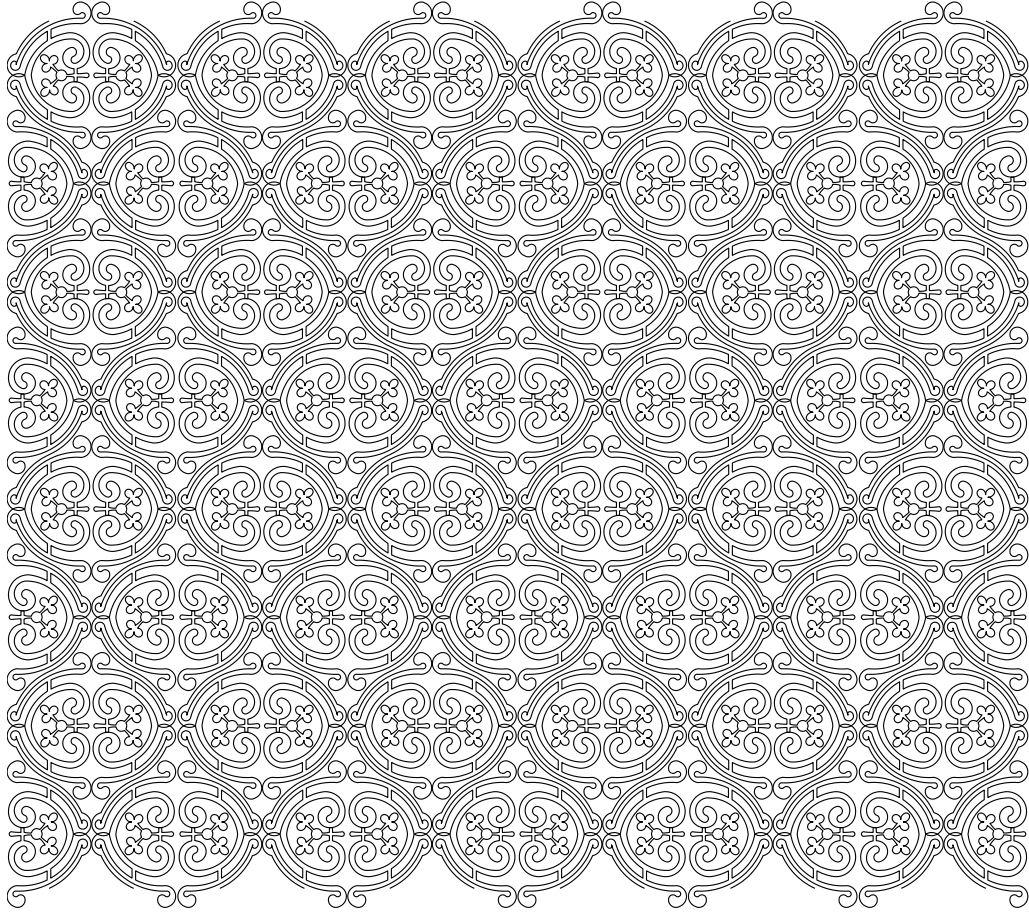
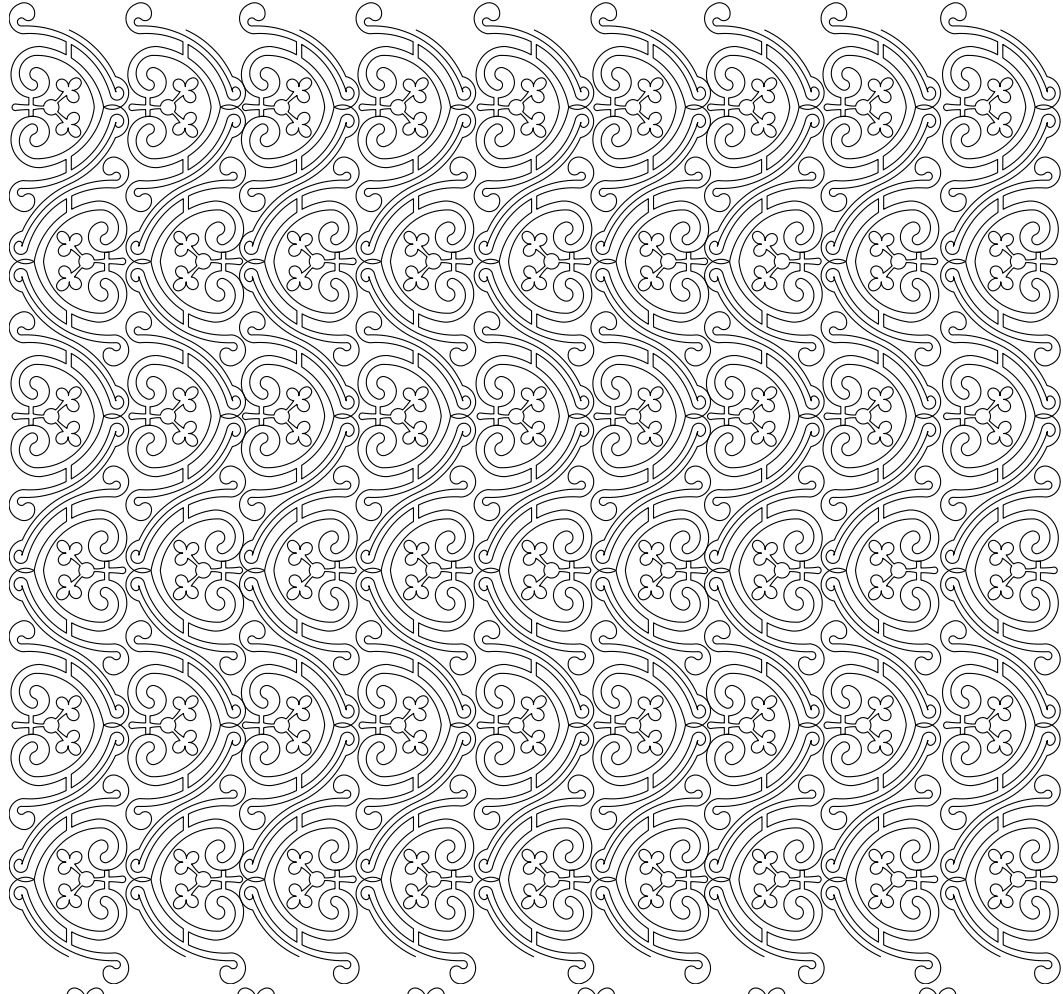
Alternating



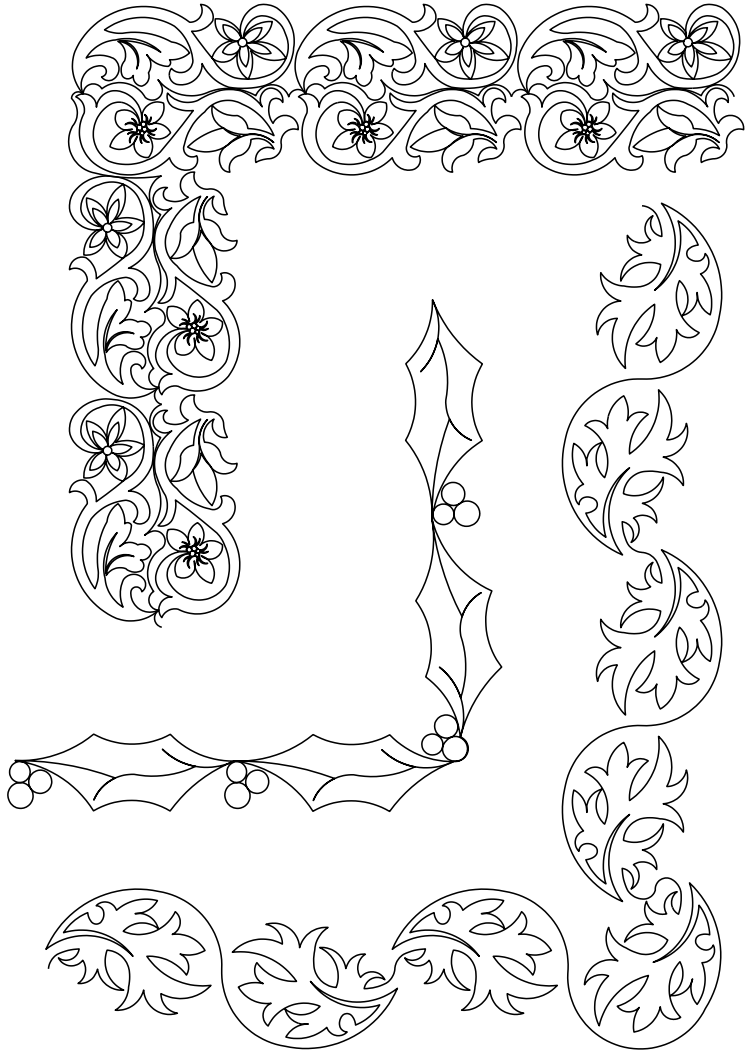
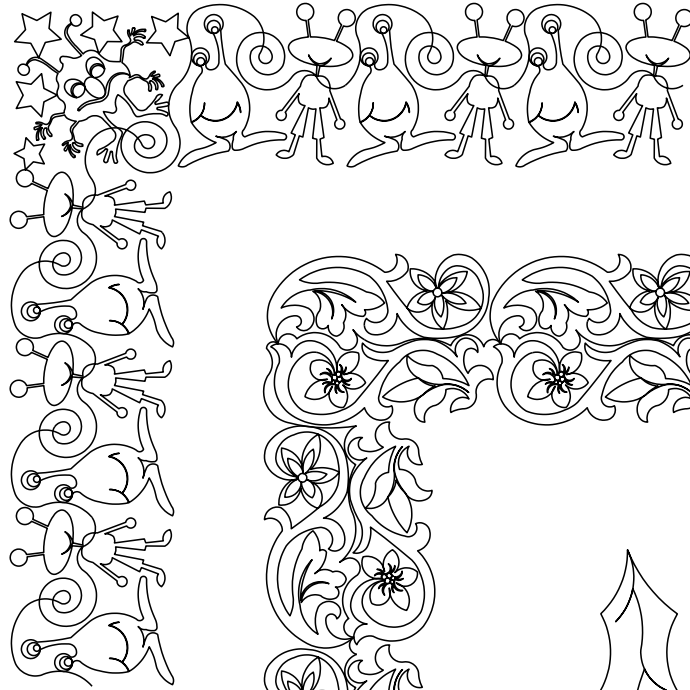
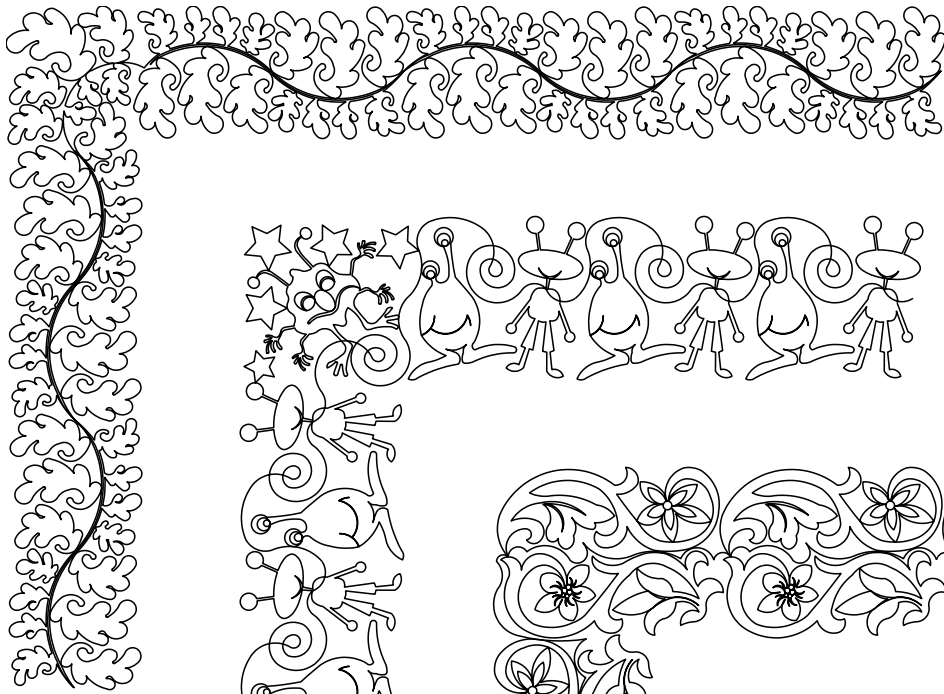
Alternating



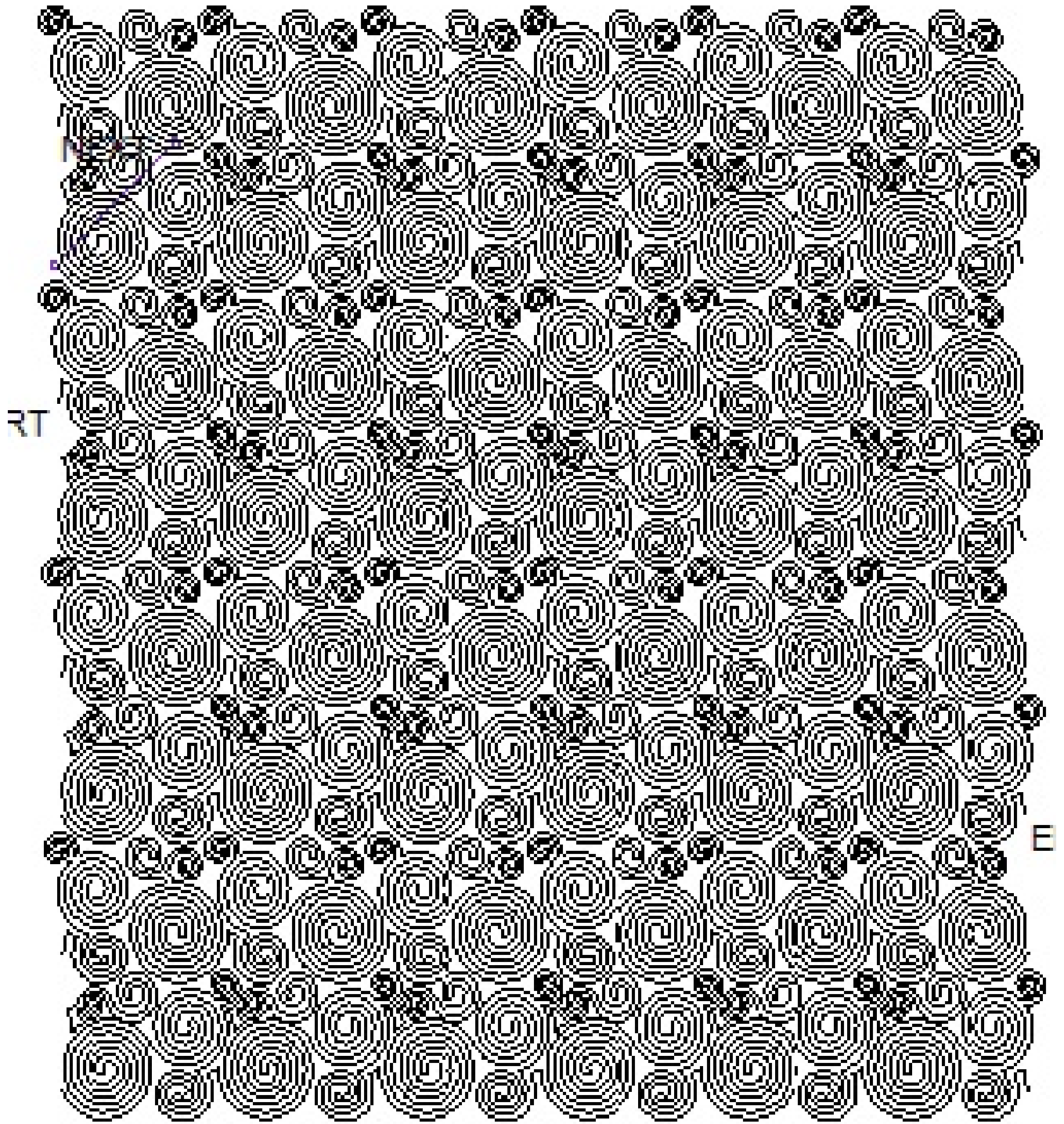
Alternating



Alternating

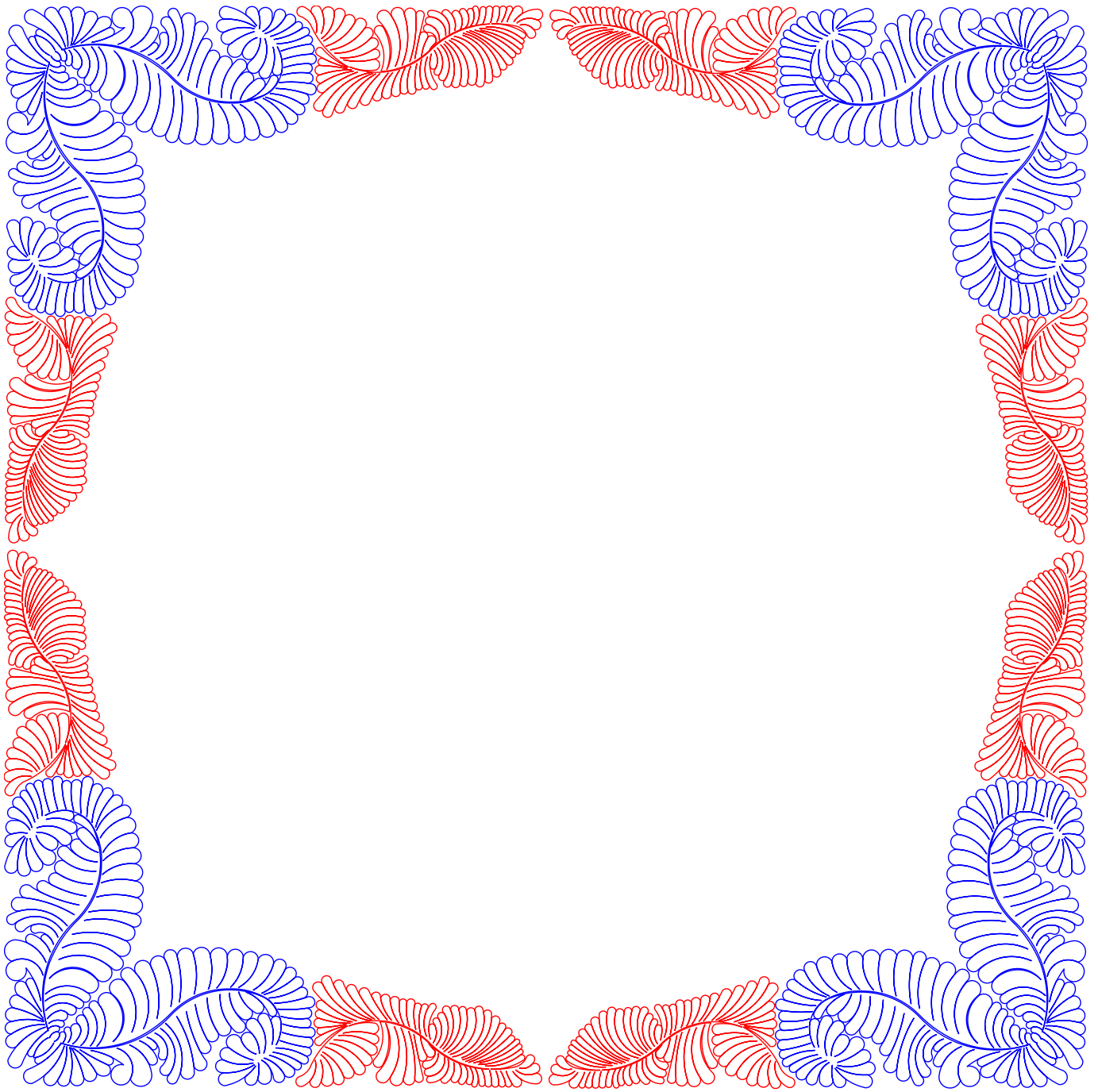


Five new border and border corner sets



These are two separate patterns which are designed to work together:

- Spiral e2e odd row
- Spiral e2e even row



Feather border treatment for
specialty quilt like Ricky Tim's
Feathers & Urns



Things to include when requesting a special pattern:

One of the perks of being a Crown Jewels Club member is that whole *Having a Designer in your Pocket* concept. Before you send us an email, take a moment or two to think through what you need. Do you need an e2e pattern or a block pattern. If you need a block pattern, what size block is it for? We realize that with a computerized system, you can resize the pattern to fit your block, but if a pattern has a great deal of detail and was designed for an 18" block, you aren't going to be pleased with it stitched out in a 9" block.

If you want a block, do you also need a triangle, sash, border and border corner?

How dense do you want your e2e pattern to be? Do you want sophisticated or whimsical: for an adult or for a child? When do you *need* it? Try not to wait until you've loaded the quilt to request a new design. The more information you provide us when you make your request the better. If you can, send along photos of the quilt blocks, fabrics, each with a measuring tape in the photo so we can see the scale and proportions of the block piecing.

Statler Users: If you'd like us to help you select patterns for your quilt, it really helps us if you'll use Creative Studio and either use the boundary tools or draw sewable p2p line and draw out a block or two. Tell us the height of the borders, etc. We'll do our best to help you. You may already have some of the patterns we choose, or you might need to buy them....or Kim might need to design something. It's kind of like fixing dinner for your family. If somebody would just answer that "what do you want for dinner" question, the cook would be much happier. After all....she's got quilts waiting for her! And then, we also love it when you send us photos of the quilt when you're done! If you don't have a Statler, just give us as much information as possible, and we'll help you, too!



You may have received a copy of our newest catalog in the mail. We had the printer send them out via bulk mail. If you'd like to have more copies (perhaps to leave with quilt shops or just to have available for your customers) you can order it on our web site. The price is \$18.00, and that includes 3 copies of the catalog and the shipping costs.



Statler Owners: S.U.G.A.R. (Statler Users Group And Representatives) 2012 Conference is scheduled for June 10—13, 2012 and it will be in Columbia, Missouri. Save the date and watch for more information

<http://www.sugarconference.com>

Send me an email with your top three needs for existing edge to edge patterns for which you'd like to see a non-interlocking version created (squared):

sweetdreamsq@aol.com

June Longarm Tips:

Tip #1: Make a backup of all your patterns and put it someplace safe....some day you'll need it.

Tip #2: Keep your thread supply out of direct sunlight. This helps prevent fading and drying, especially for those thread colors you use rarely.

Favorite Longarm Supplies Vendors:

We've had many questions from new longarm quilters about the best places to buy their supplies. So, we thought we'd provide a list of our favorite vendors. This is not an exclusive list....you may already have other vendors who take care of your longarm supply needs...and we're not trying to convert anybody.

Superior Thread: I buy King Tut Thread in the 2000 yard cones, although they have poly thread as well. They sell wholesale only, so you'll need your sales tax certificate to set up an account. They have an amazing selection of thread. They have fabulous customer service and an easy online account set up process. They also ship internationally!
<http://www.superiorthreads.com>

Kingsmen Longarm Quilting Supply: They sell Hobbs batting, Signature cotton, and A&E Perma Core thread, plus the Quick Zip system, oil for your longarm, bobbins, machine parts, etc. They don't have a minimum order for anything, and they sell retail (at wholesale prices). These people are top notch people to work with!
<http://www.kmquiltingsupply.com>

Checker Distributing: Wholesale Only....I have rarely looked in vain for anything quilt related on their site. Shopping for supplies can be addicting! Shipping is charged on large items, but not on items such as pins, needles, thread, books, scissors, or most other notions. They do charge shipping on bolts of fabric, luggage, cutting mats, Ott Lights, etc.
<http://www.checkerdist.com>

Quilter's Dream Batting: I have pretty much stopped purchasing rolls of batting. I find it easier to maintain an accurate inventory of batting, and it stores well. Unlike some packaged batting, I don't find that the QD batting is distorted, and so it doesn't require a trip through my dryer before I can use it. Some of my best friends who also have longarm quilting businesses stock packaged batting as well as batting on a roll. We agree that these people are easy to work with! <http://www.quiltersdreambatting.com>

Quilted Memories: This Hobbs Batting distributor is only a quick phone call away. She ships UPS or Fed Ex. UPS costs a bit more, but since they'll put my packages inside my garage rather than leaving it out on my front porch, I don't mind that extra cost. This lady (Lyn Heilman) makes it happen! When I find myself in a batting crunch, she's there for me! Just gotta love that! (Plus she provided all the classroom batting for the SUGAR 2010 Conference this past summer). <http://www.quiltedmemoriesllc.com>

Virginia Longarm: I buy the dress bag and the 3-sided zipper totes to deliver my quilts to customer. They bring their next quilt to me in their bag. When I arrive at our guild meetings, laden with my purple bags, people say it looks like Christmas. Their quilts stay clean and it adds a little extra class and professionalism to my business.
<http://www.virginialongarm.com> or call toll free at 855-566-4276.